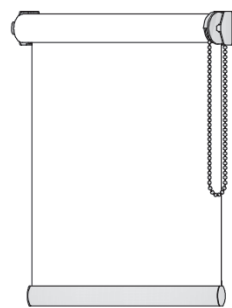
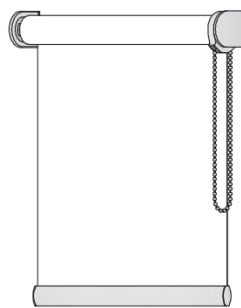


USO INTERNO

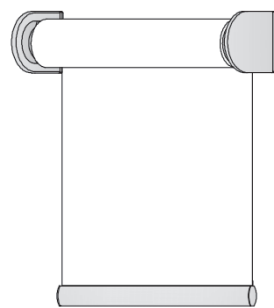
**CONFORT
FILTRANTE**



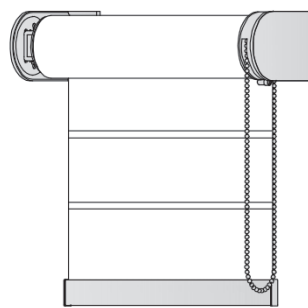
RULLO XS
A CATENA O MOLLA



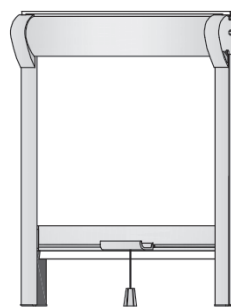
RULLO A CATENA
CON O SENZA
CASSONETTO



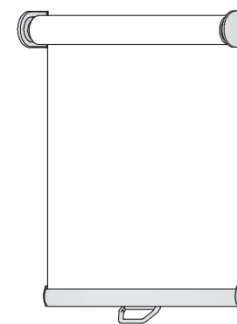
RULLO A MOTORE
CON O SENZA
CASSONETTO



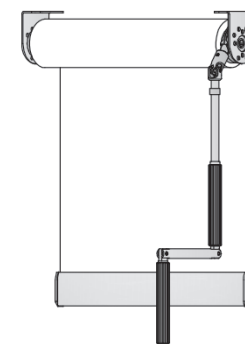
RULLO 70 XL
A CATENA O MOTORE
CON O SENZA
CASSONETTO



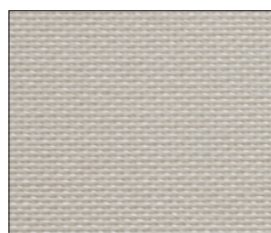
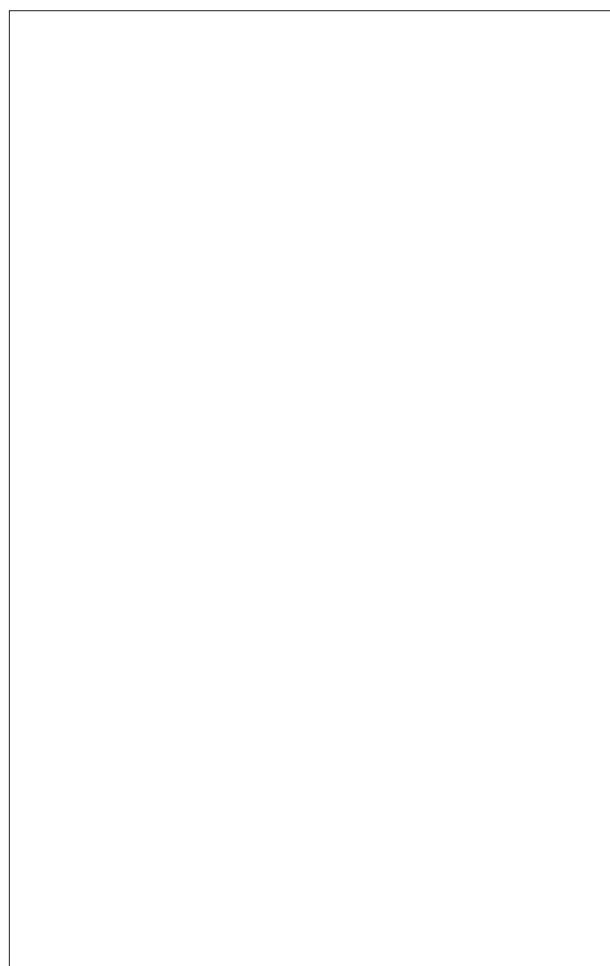
LOOK IN
A MOLLA O CATENA



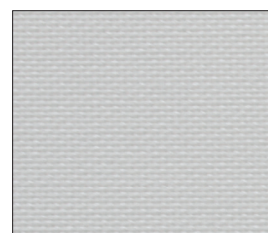
RULLO A MOLLA
CON O SENZA
CASSONETTO



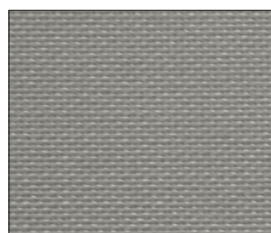
RULLO AD ARGANELLO
CON O SENZA
CASSONETTO



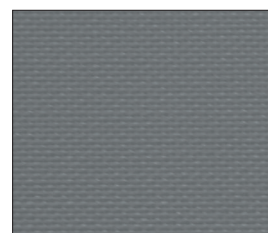
MO.10929
Sabbia



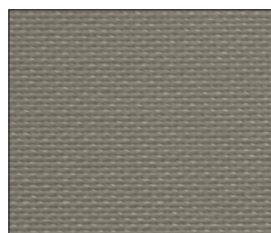
MO.10192
Grigio chiaro



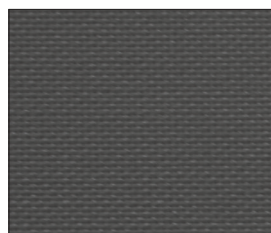
MO.10380
Tortora



MO.10950
Grigio scuro



MO.10951
Marrone chiaro



MO.10378
Testa di moro

Il lato colorato si intende vista interno stanza,
mentre quello alluminato si intende vista esterna

CONFORT
filtrante

CONFORT FILTRANTE

DESCRIZIONE MATERIALE

Description of the material
Beschreibung des Materials

100 % POLIESTERE TREVIRA CS
100 % Polyester Trevira cs
100 % Polyester Trevira cs

PESO (g/mq.)

Weight (g/mq.)
Gewicht (g/mq.)

250 ca.

SPESSORE (mm.)

Thickness (mm.)
Dicke (mm.)

0,49 ca.

LARGHEZZA TESSUTO

Fabric width
Stoffbreite

240 cm.

STABILITÀ ALLA LUCE

Light fastness
Lichtechtheit

≥ 6/7 (UNI EN ISO 105-B02)

COMPORAMENTO ALLA FIAMMA

Fire reaction
Feuerverhalten

IGNIFUGO CLASSE 1
Class 1 fire-retardant
Feuerhemmend Klasse 1



MANUTENZIONE

Maintenance
Wartung

PULIRE CON PANNI ELETTROSTATICI
(non sfregare per evitare alterazioni del tessuto)
Clean with electrostatic cloth
(don't rub for avoiding alterations of the fabric)
Mit elektrostatischem Wollstoff putzen
(nicht um Veränderungen des Gewebes zu vermeiden)

FATTORE DI APERTURA

Openness factor
Faktor von Öffnung

± 2%



COMPORAMENTO ALLA LUCE

Behaviour to the light
Lichtreflektion

COLOR ± 2%	R **	T **	A **
MO.10929	42	8	50
MO.10380	40	6	54
MO.10951	42	5	53
MO.10192	45	9	46
MO.10950	39	5	56
MO.10378	40	4	56

** R= Riflessione; T= Trasmissione; A= Assorbimento

COMPORAMENTO AL CALORE

Behaviour to the heat
Warmereflektion

COLOR ± 2%	R **	T **	A **
MO.10929	43	11	46
MO.10380	42	8	50
MO.10951	43	7	50
MO.10192	51	12	37
MO.10950	42	7	51
MO.10378	42	6	52